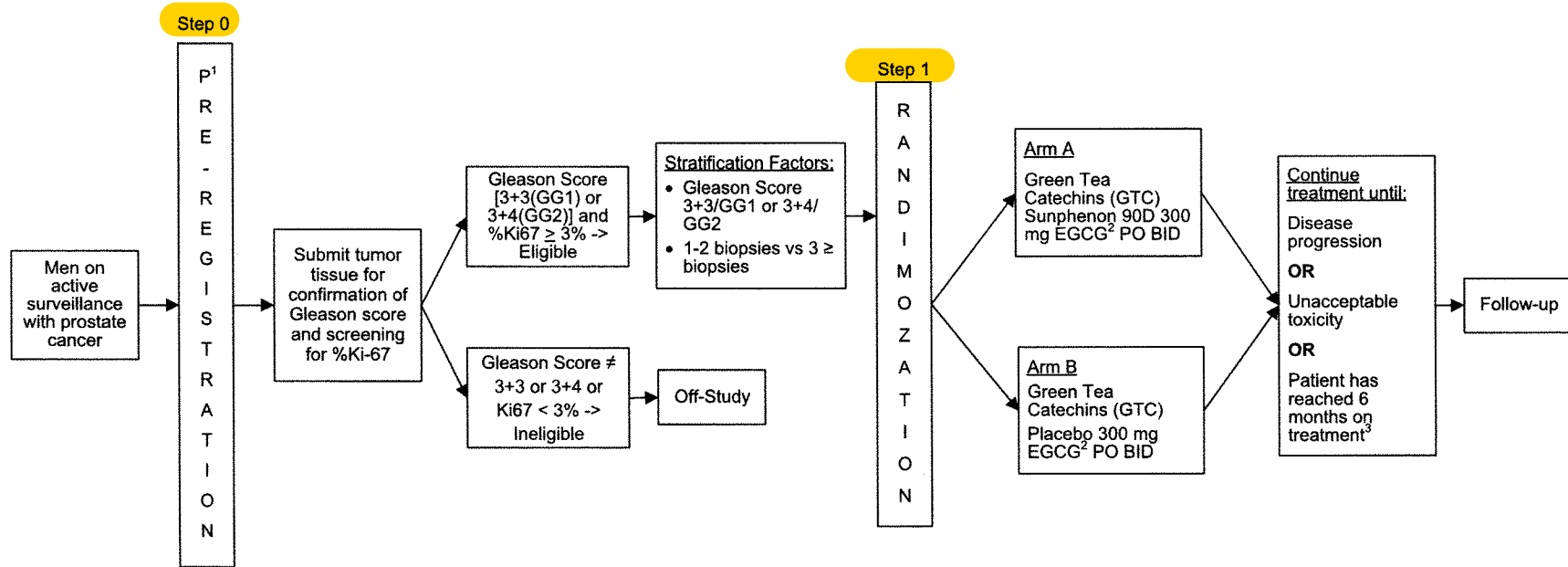


Rev. Add5

Schema



Total 360 for Step 1

1. Tumor tissue must be submitted at preregistration for central review to determine patient eligibility. See Section 10 for collection and submission instructions. 720 patients will be screened in step 0.
2. EGCG: (-)-epigallocatechin-3-gallate. Each 300mg capsule of Sunphenon® 90D/Placebo contains 135mg EGCG/capsule.
3. After 6 months on treatment, there is a mandatory end-of-study (EOS) biopsy.

NOTE: When a patient has been successfully randomized, the confirmation of randomization will indicate that the patient is on Arm X. The patient will actually be randomized to Arm A or B, but as this is a double-blind trial, that information cannot be displayed.