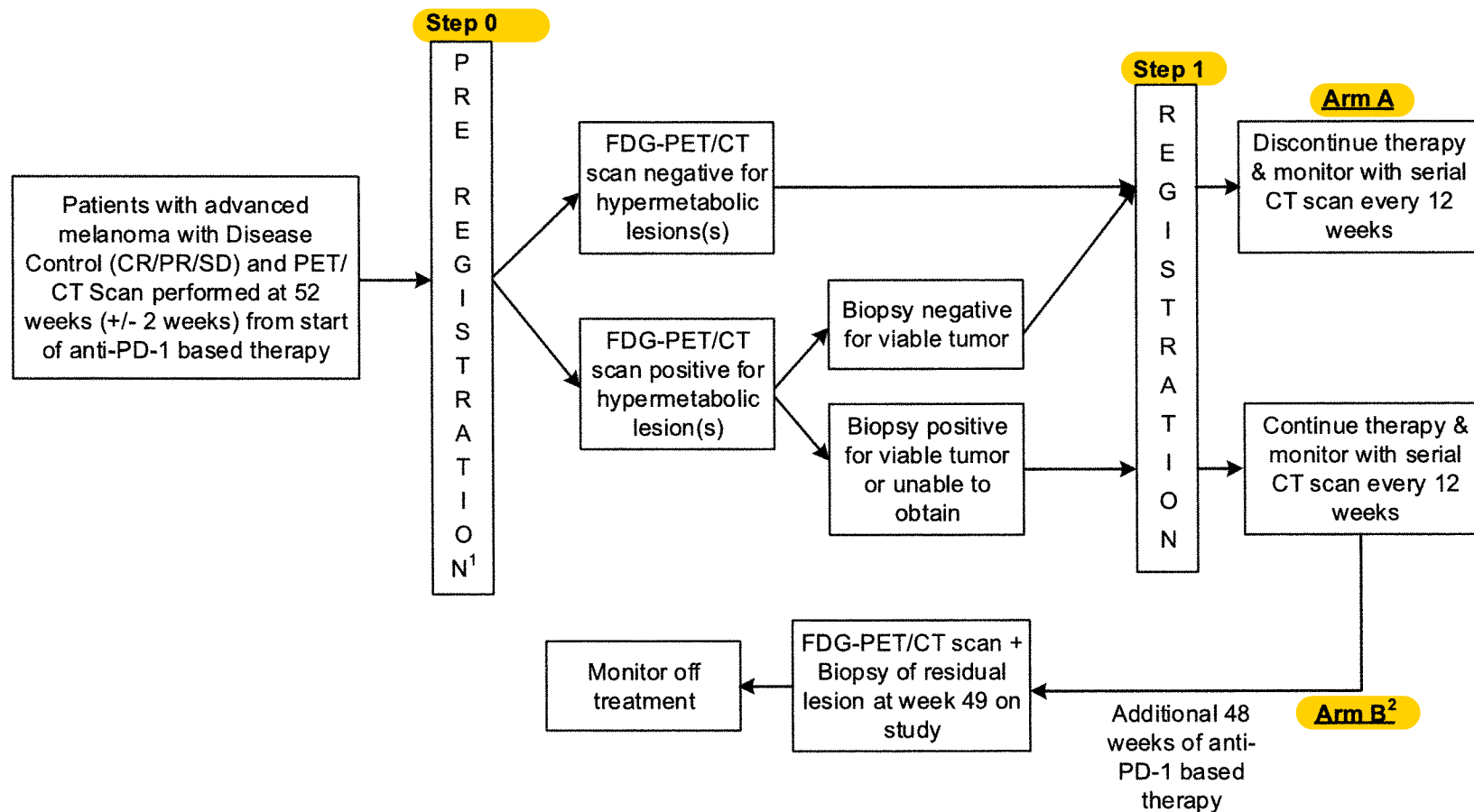


Schema



1. Patient must be actively receiving standard of care anti-PD-1 based therapy and currently be 52 weeks (+/- 2 weeks) from start of anti-PD-1 therapy at the time of step 0 pre-registration.
2. Patients assigned to Arm B will continue the same anti-PD-1 based therapy (Nivolumab, Pembrolizumab, or Nivolumab/Relatlimab FDC).