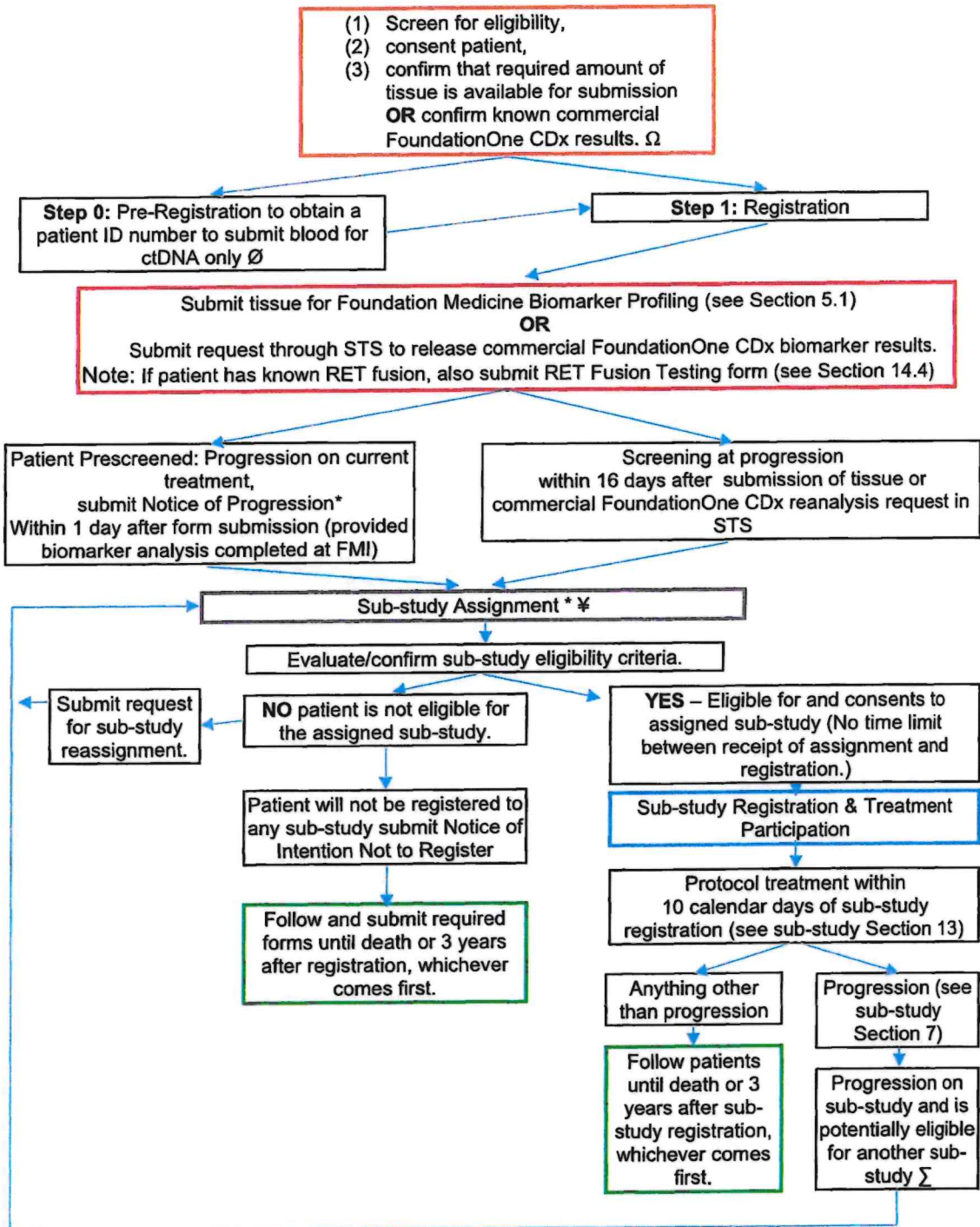


18.5 LUNGMAP Detailed Schema



Footnotes for 18.5 – **LUNGMAP Detailed Schema**

- ∅ Patients registered to Step 0 are not registered to the **LUNGMAP** protocol. To participate in **LUNGMAP**, patients must be registered to Step 1 after evaluation of patient eligibility per protocol Section 5.0. Patients registered to Step 0 must use the same SWOG patient ID for registration at Step 1.
- * If it is determined that a patient will not register to a sub-study at any time following **LUNGMAP** Step 1 registration, the *Notice of Intention Not to Register* form must be submitted. Should the decision to not register a patient to their assigned sub-study be reversed, sub-study registration is allowed despite submission of the *Notice of Intention Not to Register* form.
- ¥ Sub-study assignment will be determined by the SWOG Statistics and Data Management Center (SDMC). Sub-study assignment will be determined based on randomization for patients eligible for multiple sub-studies (see Section 11.0 for details). Patients registered to the screening/pre-screening component, but not registered to any of the sub-studies will be followed until death or 3 years after registration, whichever comes first.
- Σ Submit **LUNGMAP Request for New Sub-study Assignment Form** in Rave®
- Ω Original report date must be on or after September 1, 2019.

HIGH-LEVEL SCHEMA

