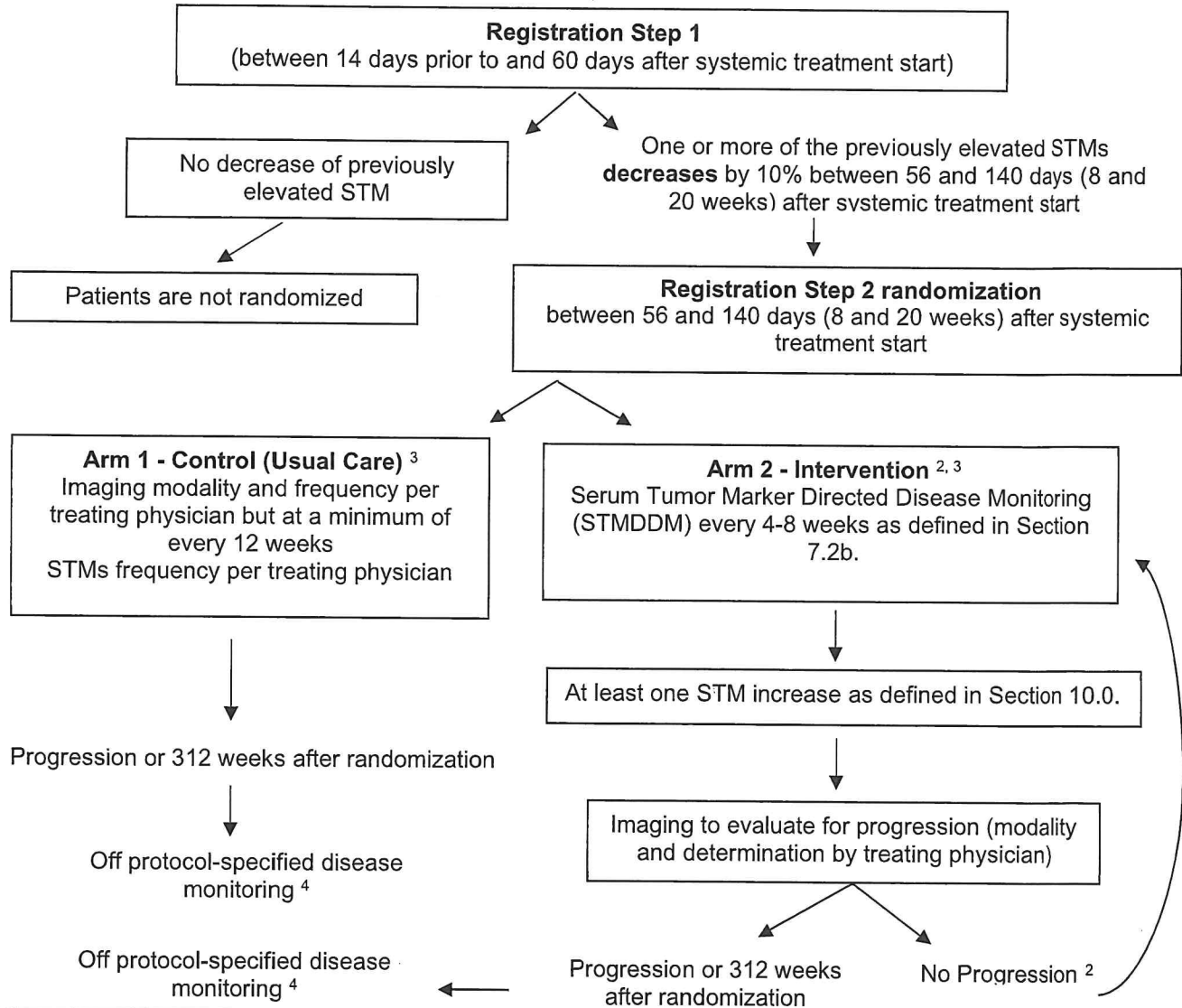


**SCHEMA**

Patients diagnosed with previously untreated metastatic HR<sup>+</sup> HER-2 negative breast cancer undergoing or planning systemic treatment<sup>1</sup>

One or more elevated breast cancer specific Serum Tumor Markers (STM)  $\geq 1.5 \times$  IULN  
(after diagnosis and +/- 2 weeks of systemic treatment start for metastatic cancer)



1. Participants are eligible if they have either de-novo metastatic breast cancer and/or recurrent breast cancer from an earlier stage that is now metastatic.  
 2. If a patient develops new signs or symptoms concerning for disease progression, imaging may occur at that point in time, regardless of STM trend. If the treating physician does not confirm progression then STMDDM continues per protocol.  
 3. Patients will discontinue protocol-specified disease monitoring at the time of progression or 312 weeks after Step 2 Randomization, whichever comes first. All patients will be followed for vital status for 312 weeks from Step 2 randomization or until death, whichever comes first.  
 4. PRO data will continue to be collected through Week 102 and resource utilization data will be collected through Week 48 on patients who progress or come off study for any reason. See [Section 7.4](#).

