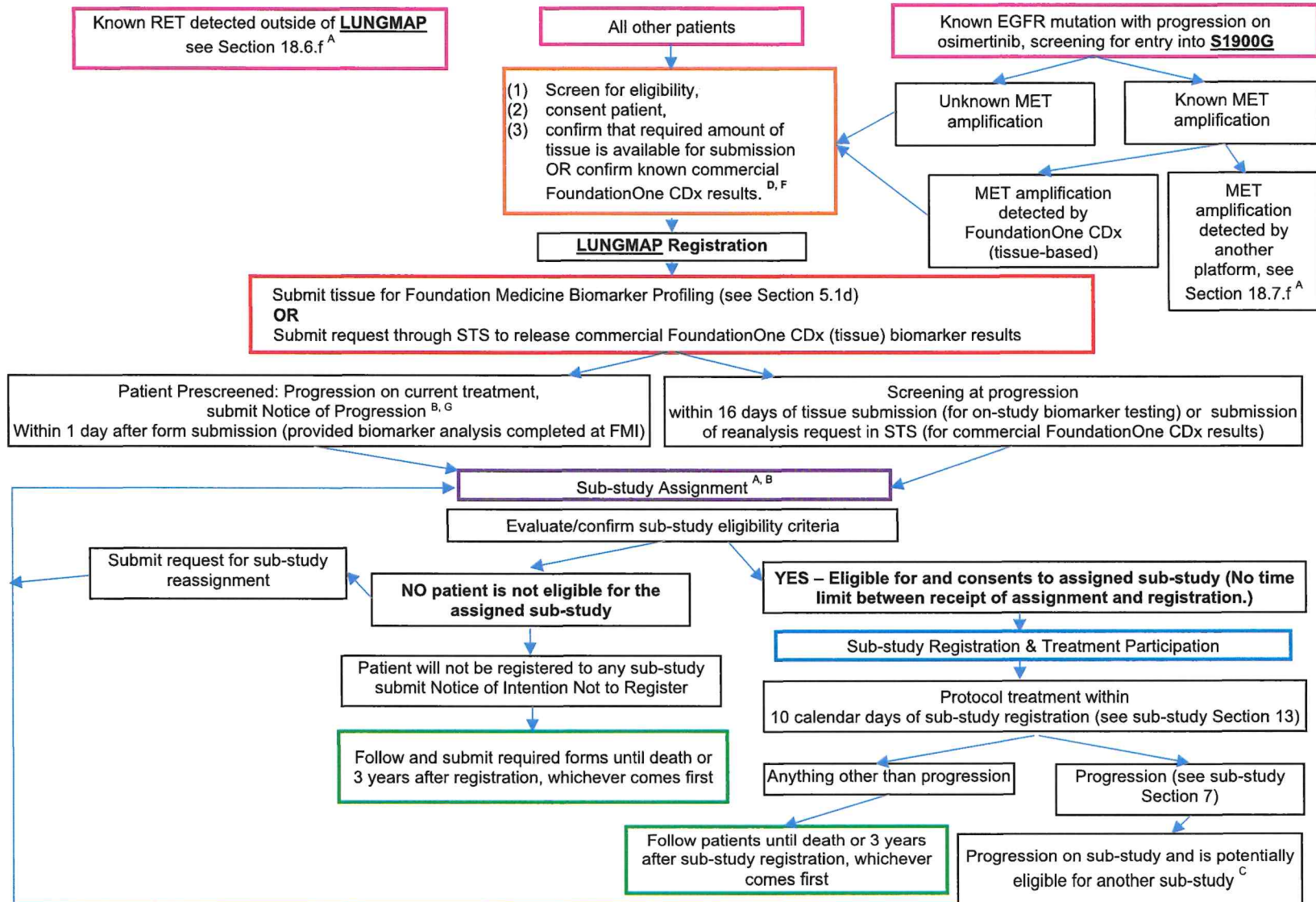


**DETAILED SCHEMA**

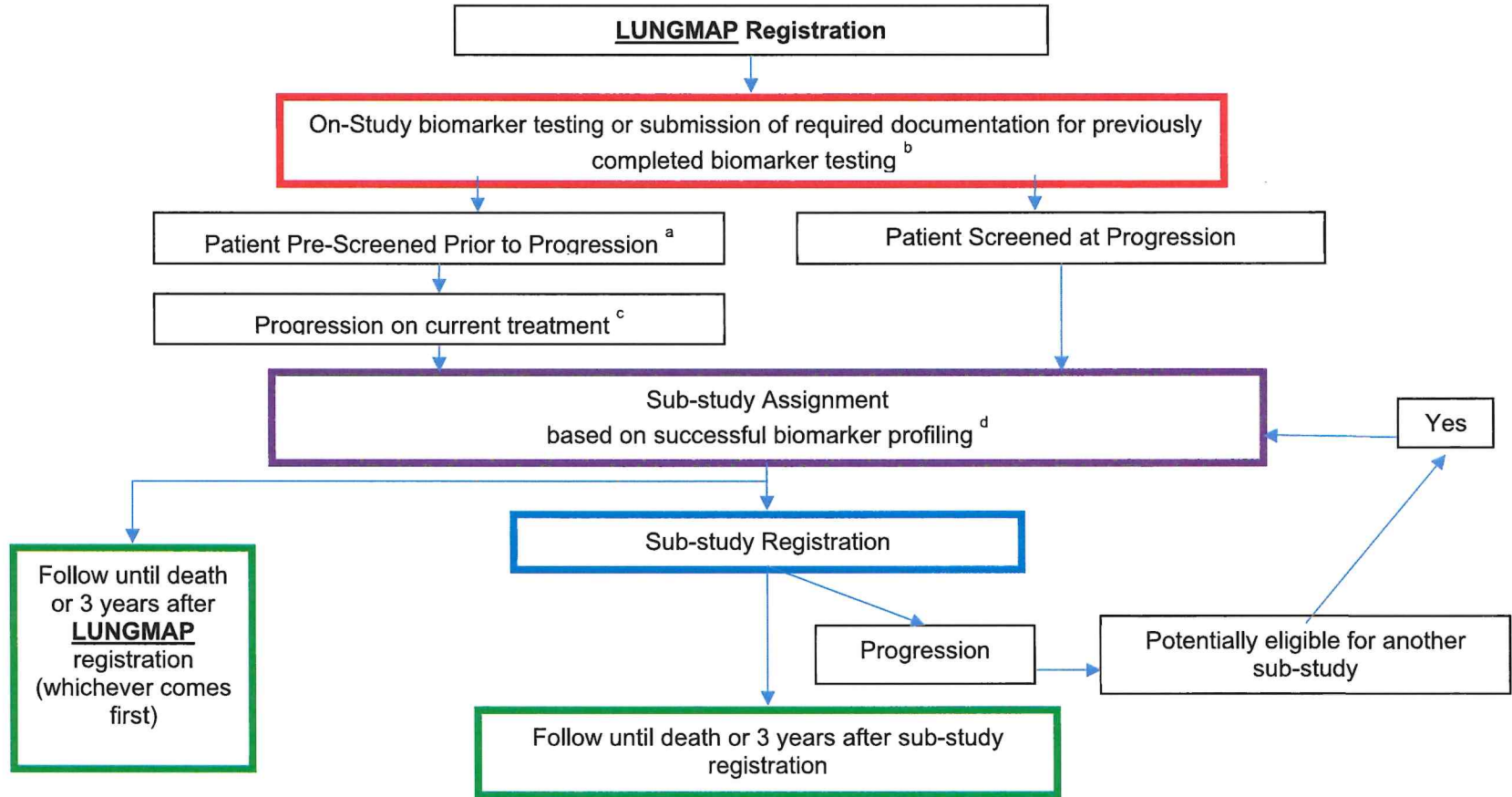


Footnotes for **LUNGMAP** Detailed Schema

- <sup>a</sup> For screening patients with a known RET fusion, see **S1900F** and [Section 18.6f](#). For screening patients with known EGFR-mutant, MET amplified NSCLC see **S1900G** and [Section 18.7f](#).
- <sup>b</sup> If it is determined that a patient will not register to a sub-study at any time following **LUNGMAP** Step 1 registration, the *Notice of Intention Not to Register* form must be submitted. Should the decision to not register a patient to their assigned sub-study be reversed, sub-study registration is allowed despite submission of the *Notice of Intention Not to Register* form.
- <sup>c</sup> Sub-study assignment will be determined by the SWOG Statistics and Data Management Center (SDMC). Sub-study assignment will be determined based on randomization for patients eligible for multiple sub-studies (see [Section 11.0](#) for details). Patients registered to the screening/pre-screening component, but not registered to any of the sub-studies will be followed until death or 3 years after registration, whichever comes first.
- <sup>d</sup> Submit **LUNGMAP** Request for New Sub-study Assignment Form in Rave®
- <sup>e</sup> Original report date must be on or after September 1, 2019.
- <sup>f</sup> If a participant with EGFR-mutant NSCLC, has a MET amplification detected on a commercial FoundationOne CDx tissue-based assay, the specimen must have been obtained after radiographic or clinical progression on osimertinib, see [Section 5.1.c](#)
- <sup>g</sup> See Section 5.1b2 for details on which patients can pre-screen.



**HIGH-LEVEL SCHEMA**



<sup>a</sup> See [Section 5.1b2](#) for details on which sub-studies allow for pre-screening.

<sup>b</sup> See [Section 5.1c](#), [7.1](#), [15.2](#), [18.6](#), and [18.7](#) for details.

<sup>c</sup> Notice of progression must be submitted. See [Section 5.1c](#), [7.1a](#), [14.4i](#), and [18.1a](#) for more details.

<sup>d</sup> Notification of sub-study assignment will be sent by email. See [Section 7.1a](#) and [18.1a](#)

